



II 2G c T5
II 2Dc T100°C

SERVICE AND OPERATING MANUAL
Model MSA3, MSA3-C
Type 7
Mine/Construction-Duty

Table of Contents

Principle of Operation 1

Installation and Start-Up 1

Air Supply 1

Air Inlet & Priming 1

Air Valve Lubrication 2

ESADS+Plus®: Externally Serviceable Air Distribution System 2

Pilot Valve 3

Pilot Valve Actuator 3

Air Exhaust 3

Between Uses 3

Check Valve Servicing 3

Diaphragm Servicing 3

Reassembly 3

Service Instructions: Troubleshooting 4

Material Codes 5

Composite Repair Parts List 6-7

Composite Repair Drawing 8

CE Declaration of Conformity - Machinery 9

CE Declaration of Conformity - ATEX 10

Safety Information

IMPORTANT



Read the safety warnings and instructions in this manual before pump installation and start-up. Failure to comply with the recommendations stated in this manual could damage the pump and void factory warranty.



When the pump is used for materials that tend to settle out or solidify, the pump should be flushed after each use to prevent damage. In freezing temperatures the pump should be completely drained between uses.

CAUTION



Before pump operation, inspect all fasteners for loosening caused by gasket creep. Retighten loose fasteners to prevent leakage. Follow recommended torques stated in this manual.



Nonmetallic pumps and plastic components are not UV stabilized. Ultraviolet radiation can damage these parts and negatively affect material properties. Do not expose to UV light for extended periods of time.



WARNING
The use of non-OEM replacement parts will void (or negate) agency certifications, including CE, ATEX, CSA, 3A and EC1935 compliance (Food Contact Materials). Warren Rupp, Inc. cannot ensure nor warrant non-OEM parts to meet the stringent requirements of the certifying agencies.

WARNING



When used for toxic or aggressive fluids, the pump should always be flushed clean prior to disassembly.



Before maintenance or repair, shut off the compressed air line, bleed the pressure, and disconnect the air line from the pump. Be certain that approved eye protection and protective clothing are worn at all times. Failure to follow these recommendations may result in serious injury or death.



Airborne particles and loud noise hazards. Wear eye and ear protection.



In the event of diaphragm rupture, pumped material may enter the air end of the pump, and be discharged into the atmosphere. If pumping a product that is hazardous or toxic, the air exhaust must be piped to an appropriate area for safe containment.



Take action to prevent static sparking. Fire or explosion can result, especially when handling flammable liquids. The pump, piping, valves, containers and other miscellaneous equipment must be properly grounded.



This pump is pressurized internally with air pressure during operation. Make certain that all fasteners are in good condition and are reinstalled properly during reassembly.

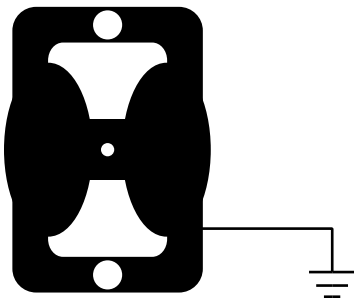


Use safe practices when lifting

RECYCLING

Many components of SANDPIPER® AODD pumps are made of recyclable materials. We encourage pump users to recycle worn out parts and pumps whenever possible, after any hazardous pumped fluids are thoroughly flushed.

Grounding ATEX Pumps



ATEX compliant pumps are suitable for use in explosive atmospheres when the equipment is properly grounded in accordance with local electrical codes. Pumps equipped with electrically conductive diaphragms are suitable for the transfer of conductive or non-conductive fluids of any explosion group. When operating pumps equipped with non-conductive diaphragms that exceed the maximum permissible projected area, as defined in EN 13461-1: 2009 section 6.7.5 table 9, the following protection methods must be applied:

- Equipment is always used to transfer electrically conductive fluids or
- Explosive environment is prevented from entering the internal portions of the pump, i.e. dry running

For further guidance on ATEX applications, please consult the factory.

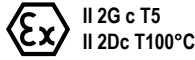


SERVICE AND OPERATING MANUAL

Model MSA3, MSA3-C

Type 7

Mine/Construction-Duty



CE

PRINCIPLE OF PUMP OPERATION

This flap swing check valve pump is powered by compressed air and is a 1:1 pressure ratio design. It alternately pressurizes the inner side of one diaphragm chamber, while simultaneously exhausting the other inner chamber. This causes the diaphragms, which are connected by a common rod, to move endwise. Air pressure is applied over the entire surface of the diaphragm, while liquid is discharged from the opposite side. The diaphragm operates under a balanced condition during the discharge stroke, which allows the unit to be operated at discharge heads over 200 feet (61 meters) of water head.

Since the diaphragms are connected by a common rod, secured by plates to the center of the diaphragms, one diaphragm performs the discharge stroke, while the other is pulled to perform the suction stroke in the opposite chamber.

For maximum diaphragm life, keep the pump as close to the liquid being pumped as possible. Positive suction head in excess of 10 feet of liquid (3.048 meters) may require a back pressure regulating device. This will maximize diaphragm life.

Alternate pressuring and exhausting of the diaphragm chamber is performed by means of an externally mounted, pilot operated, four-way spool type air distribution valve. When the spool shifts to one end of the valve body, inlet air pressure is applied to one diaphragm chamber and the other diaphragm chamber exhausts. When the spool shifts to the opposite end of the valve body, the porting of chambers is reversed. The air distribution valve spool is moved by an internal pilot valve which alternately pressurizes one side of the air distribution valve spool, while exhausting the other side. The pilot valve is shifted at each end of the diaphragm stroke by the diaphragm plate coming in contact with the end of the pilot valve spool. This pushes it into position for shifting of the air distribution valve.

The chambers are manifolded together with a suction and discharge check valve for each chamber, maintaining flow in one direction through the pump.

INSTALLATION & START-UP

Locate the pump as close to the product being pumped as possible, keeping suction line length and number of fittings to a minimum. Do not reduce line size.

For installations of rigid piping, short flexible sections of hose should be installed between pump and piping. This reduces vibration and strain to the piping system. A Warren Rupp Tranquillizer® Surge Suppressor is recommended to further reduce pulsation in flow.

This pump was tested at the factory prior to shipment and is ready for operation. It is completely self-priming from a dry start for suction lifts of 20 feet (6.096 meters) or less. For suction lifts exceeding 20 feet of liquid, fill the chambers with liquid prior to priming.

AIR SUPPLY

Air supply pressures cannot exceed 125 psi (8.61 bar). Connect the pump air inlet to an air supply of sufficient capacity and pressure required for desired performance. When the air line is solid piping, use a short length of flexible hose (not less than 3/4" (19mm) in diameter) between pump and piping to eliminate strain to pipes.

AIR INLET & PRIMING

For start-up, open an air valve approximately 1/2" to 3/4" turn. After the unit primes, an air valve can be opened to increase flow as desired. If opening the valve increases cycling rate, but does not increase flow rate, cavitation has occurred, and the valve should be closed slightly.

For the most efficient use of compressed air and the longest diaphragm life, throttle the air inlet to the lowest cycling rate that does not reduce flow.

AIR VALVE LUBRICATION

The Sandpiper pump's pilot valve and main air valve assemblies are designed to operate WITHOUT lubrication. This is the preferred mode of operation. There may be instances of personal preference, or poor quality air supplies when lubrication of the compressed air supply is required. The pump air system will operate with properly lubricated compressed air supplies. Proper lubrication of the compressed air supply would entail the use of an air line lubricator (available from Warren Rupp) set to deliver one drop of 10 weight, non-detergent oil for every 20 SCFM of air the pump consumed at its point of operation. Consult the pump's published Performance Curve to determine this.

It is important to remember to inspect the sleeve and spool set routinely. It should move back and forth freely. This is most important when the air supply is lubricated. If a lubricator is used, oil accumulation will, over time, collect any debris from the compressed air. This can prevent the pump from operating properly.

Water in the compressed air supply can create problems such as icing or freezing of the exhaust air causing the pump to cycle erratically, or stop operating. This can be addressed by using a point of use air dryer (available from Warren Rupp) to supplement a plant's air drying equipment. This device will remove excess water from the compressed air supply and alleviate the icing or freezing problem.

Externally Serviceable Air Distribution System

Please refer to the exploded view drawing and parts list in the Service Manual supplied with your pump. If you need replacement or additional copies, contact your local Warren Rupp Distributor, or the Warren Rupp factory Literature Department at the number shown below. To receive the correct manual, you must specify the MODEL and TYPE information found on the name plate of the pump.

Models with 1" suction/discharge or larger and METAL center sections

The main air valve sleeve and spool set is located in the valve body mounted on the pump with four hex head capscrews. The valve body assembly is removed from the pump by removing these four hex head capscrews.

With the valve body assembly off the pump, access to the sleeve and spool set is made by removing four hex head capscrews (each end) on the end caps of the valve body assembly. With the end caps removed, slide the spool back and forth in the sleeve. The spool is closely sized to the sleeve and must move freely to allow for proper pump operation. An accumulation of oil, dirt or other contaminants from the pump's air supply, or from a failed diaphragm, may prevent the spool from moving freely. This can cause the spool to stick in a position that prevents the pump from operating. If this is the case, the sleeve and spool set should be removed from the valve body for cleaning and further inspection.

Remove the spool from the sleeve. Using an arbor press or bench vise (with an improvised mandrel), press the sleeve from the valve body. Take care not to damage the sleeve. At this point, inspect the o-rings on the sleeve for nicks, tears or abrasions. Damage of this sort could happen during assembly or servicing. A sheared or cut o-ring can allow the pump's compressed air supply to leak or bypass within the air valve assembly, causing the pump to leak compressed air from the pump air exhaust or not cycle properly. This is most noticeable at pump dead head or high discharge pressure conditions. Replace any of these o-rings as required or set up a routine, preventive maintenance schedule to do so on a regular basis. This practice should include cleaning the spool and sleeve components with a safety solvent or equivalent, inspecting for signs of wear or damage, and replacing worn components.

To re-install the sleeve and spool set, lightly lubricate the o-rings on the sleeve with an o-ring assembly lubricant or lightweight oil (such as 10 wt. air line lubricant). Press the set into the valve body easily, without shearing the o-rings. Re-install one end cap, gasket and bumper on the valve body. Using the arbor press or bench vise that was used in disassembly, press the sleeve back into the valve body. You may have to clean the surfaces of the valve body where the end caps mount. Material may remain from the old gasket. Old material not cleaned from this area may cause air leakage after reassembly. Take care that the bumper stays in place allowing the sleeve to press in all the way. Reinstall the spool, the opposite end cap, gasket and bumper on the valve body. After inspecting and cleaning the gasket surfaces on the valve body and intermediate, reinstall the valve body on the pump using new gaskets. Tighten the four hex head capscrews evenly and in

an alternating cross pattern.

PILOT VALVE

The pilot valve assembly is accessed by removing the main air distribution valve body from the pump and lifting the pilot valve body out of the intermediate housing.

Most problems with the pilot valve can be corrected by replacing the o-rings. Always grease the spool prior to inserting it into the sleeve. If the sleeve is removed from the body, reinsertion must be at the chamfered side. Grease the o-rings to slide the sleeve into the valve body. Securely insert the retaining ring around the sleeve. When reinserting the pilot valve, push both plungers (located inside the intermediate bracket) out of the path of the pilot valve spool ends to avoid damage.

PILOT VALVE ACTUATOR

Bushings for the pilot valve actuators are threaded into the intermediate bracket from the outside. The plunger may be removed for inspection or replacement. First remove the air distribution valve body and the pilot valve body from the pump. The plungers can be located by looking into the intermediate. It may be necessary to use a fine piece of wire to pull them out. The bushing can be turned out through the inner chamber by removing the outer chamber assembly. Replace the bushings if pins have bent.

AIR EXHAUST

If a diaphragm fails, the pumped liquid or fumes can enter the air end of the pump, and be exhausted into the atmosphere. When pumping hazardous or toxic materials, pipe the exhaust to an appropriate area for safe disposition.

This pump can be submerged if materials of construction are compatible with the liquid. The air exhaust must be piped above the liquid level. Piping used for the air exhaust must not be smaller than 1" (2.54 cm). Reducing the pipe size will restrict air flow and reduce pump performance. When the product source is at a higher level than the pump (flooded suction), pipe the exhaust higher than the product source to prevent siphoning spills.

Freezing or icing-up of the air exhaust can occur under certain temperature and humidity conditions. Use of a Warren Rupp Extractor/Dryer unit should eliminate most icing problems.

BETWEEN USES

When used for materials that tend to settle out or transform to solid form, the pump should be completely flushed after each use, to prevent damage. Product remaining in the pump between uses could dry out or settle out. This could cause problems with valves and diaphragms at re-start. In freezing temperatures, the pump must be drained between uses in all cases.

CHECK VALVE SERVICING

For flap valve inspection or replacement, remove the flange bolts securing the suction and discharge elbows and loosen Dresser-type couplings. The flap valves are exposed for inspection or servicing upon removal of elbows.

DIAPHRAGM SERVICING

Diaphragms are serviced by removing the outer diaphragm chambers which are secured with 12 bolts. After removing the outer chamber, unbolt the diaphragm plate by removing 6 socket head capscrews (Allen wrench required). To remove the diaphragm rod, remove the inner diaphragm plate secured by a nut on the end of the diaphragm rod. The opposite diaphragm and rod can then be removed as a unit. The interior components consisting of sleeve bearings, rod seals, and pilot valve actuator bushings are now accessible for service if required.

REASSEMBLY

All procedures for reassembling the pump are the reverse of the above with these further instructions:

1. Install the diaphragms with their natural bulge outward. Make certain that the rubber diaphragm rod bumper is installed on the rod behind each inner diaphragm plate. Re-torque the 6 socket head capscrews that secure the diaphragm between the plates to 30 foot lbs. (40.67 Newton meters) torque reading.

2. Caution should be used while reassembling the check valves. The valves are designed for some preload over the retainer and the hinge pad. This is done to insure proper face contact with the seat. After all parts are in place, tighten the

lock nuts down on the assembly to the point where visual inspection shows that seat and valve face mate without gap. This is important for dry primes. However, after priming action has started, valves will function due to differential pressure without concern or trouble.

TROUBLE SHOOTING

PROBLEM: Pump cycles but will not pump. (Note: higher suction lifts require faster cycling speed for priming.)

POSSIBLE CAUSES:

- A. Air leak in suction line.
- B. Excessive suction lift.
- C. Check valve not closing.
- D. Leakage at joint of suction manifold or elbow flange.
- E. Suction line plugged.
- F. Diaphragm ruptured.

PROBLEM: Pump will not cycle. (Note: Always disconnect air supply to relieve air pressure before disassembling any portion of pump.)

POSSIBLE CAUSES:

- A. Discharge hose or line plugged, or discharge head requirement greater than air pressure. (Disconnect discharge line to check.)
- B. Spool in air distribution valve not shifting. (Remove end cap and check spool - must slide freely.)
- C. Diaphragm ruptured. (Air will escape out discharge line in this case.)
- D. Blockage in diaphragm chamber preventing movement. (Shut off air supply and reopen after pressure is relieved.)
- E. Plugged or dirty exhaust muffler.

PROBLEM: Uneven discharge flow. (Indicates one chamber not operating properly.)

POSSIBLE CAUSES:

- A. Check valve not sealing properly in one chamber.
- B. Diaphragm failure in one chamber.
- C. Air leak at suction manifold joint or elbow flange one side.

For additional information, see the Warren Rupp Troubleshooting Guide.

WARRANTY

This pump is warranted for a period of five years against defective material and workmanship. Failure to comply with the recommendations stated in this manual voids all factory warranty.

RECOMMENDED WARREN RUPP ACCESSORIES TO MAXIMIZE PUMP PERFORMANCE:

- Tranquilizer[®] Surge Suppressor. For nearly pulse-free flow.
- Warren Rupp Air Dryer. For clean, dry compressed air.
- Warren Rupp Filter/Regulator. For modular installation and service convenience.
- Warren Rupp Speed Control. For manual or programmable process control. Manual adjustment or 4-20mA reception.

For more detailed information on these accessories, contact your local Warren Rupp Factory-Authorized Distributor, or Warren Rupp corporate headquarters.

Material Codes

The Last 3 Digits of Part Number

000	Assembly, sub-assembly; and some purchased items	333	Carbon Steel, Electroless Nickel Plated	552	Unfilled Polypropylene
010	Cast Iron	335	Galvanized Steel	553	Unfilled Polypropylene
012	Powered Metal	336	Zinc Plated Yellow Brass	555	Polyvinyl Chloride
015	Ductile Iron	337	Silver Plated Steel	556	Black Vinyl
020	Ferritic Malleable Iron	340	Nickel Plated	557	Conductive Polypropylene
025	Music Wire	342	Filled Nylon	558	Conductive HDPE
080	Carbon Steel, AISI B-1112	353	Geolast; Color: Black	559	Glass-Filled Conductive Polypropylene
100	Alloy 20	354	Injection Molded #203-40 Santoprene- Duro 40D +/-5; Color: RED	570	Rulon II
110	Alloy Type 316 Stainless Steel	355	Thermal Plastic	580	Ryton
111	Alloy Type 316 Stainless Steel (Electro Polished)	356	Hytrel	590	Valox
112	Alloy C	357	Injection Molded Polyurethane	591	Nylatron G-S
113	Alloy Type 316 Stainless Steel (Hand Polished)	358	Urethane Rubber (Some Applications) (Compression Mold)	592	Nylatron NSB
114	303 Stainless Steel			600	PTFE (virgin material) Tetrafluorocarbon (TFE)
115	302/304 Stainless Steel	359	Urethane Rubber	601	PTFE (Bronze and moly filled)
117	440-C Stainless Steel (Martensitic)	360	Nitrile Rubber. Color coded: RED	602	Filled PTFE
120	416 Stainless Steel (Wrought Martensitic)	361	FDA Accepted Nitrile	603	Blue Gylon
123	410 Stainless Steel (Wrought Martensitic)	363	FKM (Fluorocarbon). Color coded: YELLOW	604	PTFE
148	Hardcoat Anodized Aluminum	364	E.P.D.M. Rubber. Color coded: BLUE	606	PTFE
149	2024-T4 Aluminum	365	Neoprene Rubber. Color coded: GREEN	607	Envelon
150	6061-T6 Aluminum	366	Food Grade Nitrile	608	Conductive PTFE
151	6063-T6 Aluminum	368	Food Grade EPDM	610	PTFE Integral Silicon
152	2024-T4 Aluminum (2023-T351)	370	Butyl Rubber. Color coded: BROWN	611	PTFE Integral FKM
154	Almag 35 Aluminum	371	Philthane (Tuftane)	632	Neoprene/Hytrel
155	356-T6 Aluminum	374	Carboxylated Nitrile	633	FKM (Fluorocarbon)/PTFE
156	356-T6 Aluminum	375	Fluorinated Nitrile	634	EPDM/PTFE
157	Die Cast Aluminum Alloy #380	378	High Density Polypropylene	635	Neoprene/PTFE
158	Aluminum Alloy SR-319	379	Conductive Nitrile	637	PTFE, FKM (Fluorocarbon)/PTFE
159	Anodized Aluminum	405	Cellulose Fibre	638	PTFE, Hytrel/PTFE
162	Brass, Yellow, Screw Machine Stock	408	Cork and Neoprene	639	Nitrile/TFE
165	Cast Bronze, 85-5-5-5	425	Compressed Fibre	643	Santoprene/EPDM
166	Bronze, SAE 660	426	Blue Gard	644	Santoprene/PTFE
170	Bronze, Bearing Type, Oil Impregnated	440	Vegetable Fibre	650	Bonded Santoprene and PTFE
175	Die Cast Zinc	465	Fibre	654	Santoprene Diaphragm, PTFE Overlay Balls and seals
180	Copper Alloy	500	Delrin 500	656	Santoprene Diaphragm and Check Balls/EPDM Seats
305	Carbon Steel, Black Epoxy Coated	501	Delrin 570	661	EPDM/Santoprene
306	Carbon Steel, Black PTFE Coated	502	Conductive Acetal, ESD-800		
307	Aluminum, Black Epoxy Coated	503	Conductive Acetal, Glass-Filled		
308	Stainless Steel, Black PTFE Coated	505	Acrylic Resin Plastic		
309	Aluminum, Black PTFE Coated	506	Delrin 150		
310	PVDF Coated	520	Injection Molded PVDF Natural color		
330	Zinc Plated Steel	521	Conductive PVDF		
331	Chrome Plated Steel	540	Nylon		
332	Aluminum, Electroless Nickel Plated	541	Nylon		
		542	Nylon		
		544	Nylon Injection Molded		
		550	Polyethylene		
		551	Glass Filled Polypropylene		

Delrin and Hytrel are registered tradenames of E.I. DuPont.

Gylon is a registered tradename of Garlock, Inc.

Nylatron is a registered tradename of Polymer Corp.

Santoprene is a registered tradename of Monsanto Corp.

Rulon II is a registered tradename of Dixon Industries Corp.

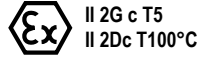
Ryton is a registered tradename of Phillips Chemical Co.

Valox is a registered tradename of General Electric Co.

Warren Rupp, SANDPIPER, Portapump, Tranquilizers and SludgeMaser are registered tradenames of IDEX AODD, Inc.



SERVICE AND OPERATING MANUAL
Model MSA3, MSA3-C
Type 7
Mine/Construction-Duty



CE

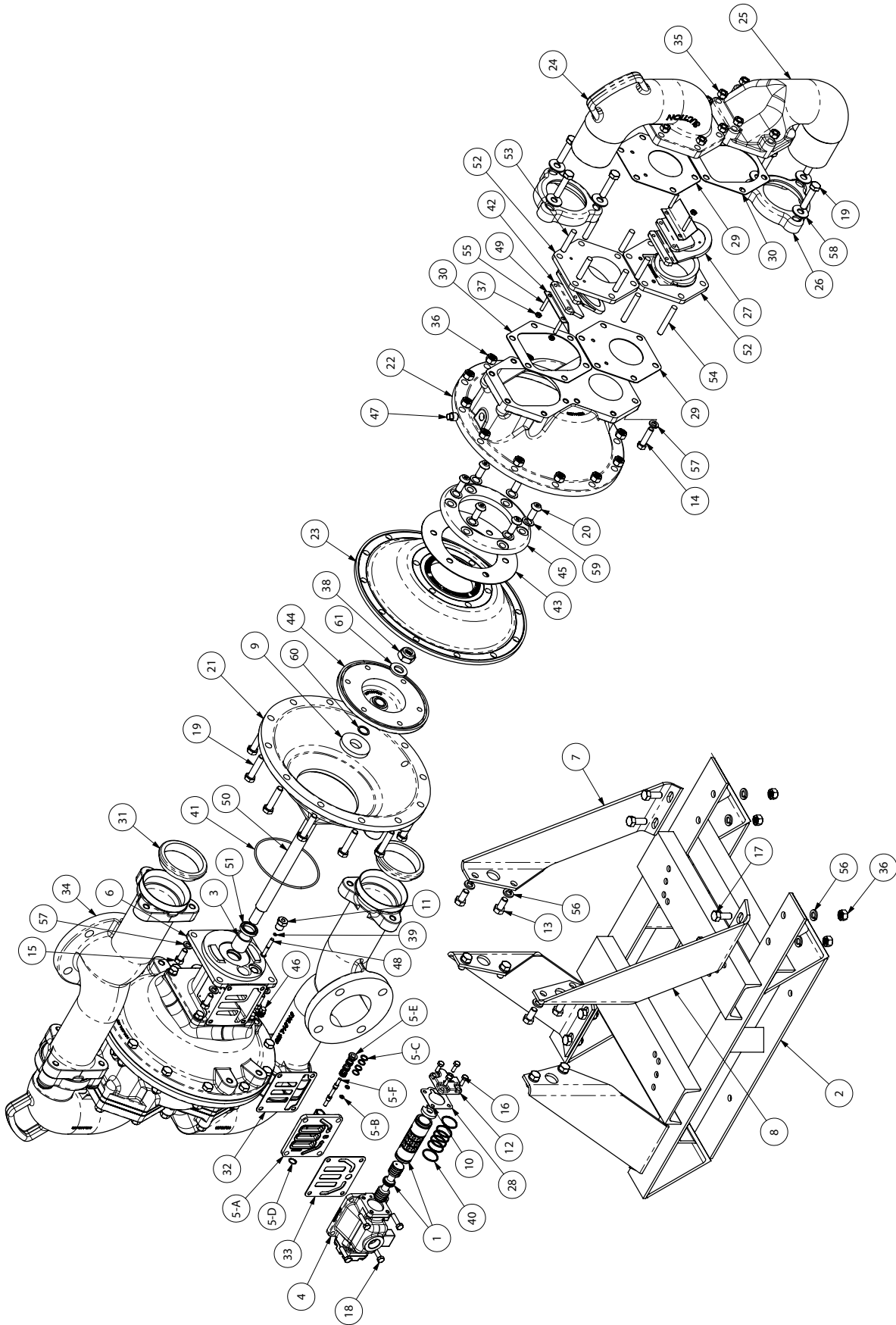
ITEM NO.	PART NUMBER	DESCRIPTION	QTY.
1	031.012.000	SLEEVE & SPOOL SET	1
2	060.096.000 *	BASE, PUMP	1
3	070.006.170	BEARING	2
4	095.043.156	BODY, AIR VALVE	1
5	095.073.001	ASSEMBLY, PILOT VALVE	1
5-A	095.070.558	BODY, PILOT VALVE	1
5-B	560.023.360	O-RING (SPOOL)	2
5-C	560.033.360	O-RING	4
5-D	675.037.080	RETAINING RING	1
5-E	755.025.000	SLEEVE, PILOT VALVE	1
5-F	775.026.000	SPOOL, PILOT VALVE	1
6	114.002.156	INTERMEDIATE	1
7	115.020.080	BRACKET, FOOT	2
8	115.021.080	BRACKET, FOOT	2
9	132.002.360	BUMPER, DIAPHRAGM PLATE	2
10	132.014.358	BUMPER, AIR VALVE	2
11	135.016.162	BUSHING, THREADED, W/ O-RING 560.001.360	2
12	165.011.157	CAP, END	2
13	170.012.330	CAPSCREW, HEX HEAD 1/2-13 UNC X 2.00	8
14	170.023.330	CAPSCREW, HEX HEAD	4
15	170.024.330	CAPSCREW, HEX HD, 7/16-14 X 1	8
16	170.032.330	CAPSCREW, HEX HEAD 1/4-20 X 3/4	8
17	170.034.330 *	CAPSCREW, HEX HEAD 1/2-13 UNC X 2.00	8
18	170.045.330	CAPSCREW, HEX HEAD	4
19	170.066.330	CAPSCREW, HEX, 1/2-13 X 2.25	36
20	172.001.330	CAPSCREW, SOCKET	12
21	196.003.155	CHAMBER, INNER	2
22	196.004.155	CHAMBER, OUTER	2
23	286.018.354	DIAPHRAGM	2
	286.018.360	DIAPHRAGM	2
	286.018.365	DIAPHRAGM	2
24	312.015.155	ELBOW, SUCTION	2
25	312.016.155	ELBOW, DISCHARGE	2
26	334.020.000	FLANGE, FOLLOWER	4
27	338.008.360	FLAP VALVE	4
	338.008.365	FLAP VALVE	4
	338.011.354	FLAP VALVE	4
28	360.010.425	GASKET, END CAP	2
29	360.013.379	GASKET, FLANGE	4
	360.013.384	GASKET, FLANGE	4
30	360.014.379	GASKET, FLANGE	4
	360.014.384	GASKET, FLANGE	4
31	360.021.000	GASKET	4
32	360.041.379	GASKET, VALVE BODY	1
33	360.048.425	GASKET, VALVE BODY	1
34	518.014.156	MANIFOLD	2
35	545.007.330	NUT, HEX - 7/16-14	20
36	545.008.330	NUT, HEX 1/2-13	32
	545.008.330 *	NUT, HEX 1/2-13	24
37	547.002.110	NUT, STOP	8
38	547.006.330	NUT, STOP	2

ITEM NO.	PART NUMBER	DESCRIPTION	QTY.
39	560.001.360	O-RING	2
40	560.020.360	O-RING	6
41	560.022.360	O-RING	2
42	<u>570.002.360</u>	PAD, HINGE	4
	<u>570.002.365</u>	PAD, HINGE	4
43	<u>570.012.371</u>	PAD, WEAR	2
44	612.014.000	PLATE, DIAPHRAGM	2
45	612.015.156	PLATE, OUTER DIAPHRAGM	2
46	618.003.330	PLUG, PIPE, 1/4	2
47	618.004.330	PIPE, PLUG	2
48	620.011.114	PLUNGER, ACTUATOR	2
49	670.006.115	RETAINER, FLAP VALVE	4
50	685.008.120	ROD, DIAPHRAGM	1
51	720.004.360	SEAL, U-CUP	2
52	722.007.010	SEAT, FLAP VALVE	4
53	807.016.330	7/16-14 STUD	12
54	807.017.330	7/16-14 X 3 STUD	8
55	807.018.110	STUD, 1/4-20	8
56	900.003.330	WASHER, LOCK, 1/2	16
	900.003.330 *	WASHER, LOCK, 1/2	8
57	900.006.330	WASHER, LOCK - 7/16	12
58	901.006.330	WASHER, FLAT, 1/2	12
59	901.011.180	WASHER	12
60	901.013.180	WASHER, SEALING	2
61	901.023.330	WASHER, FLAT	2

* NOT USED ON MODEL MSA3

Parts underlined are only available for sale in kits

Model MSA3-C



5 - YEAR Limited Product Warranty

Warren Rupp, Inc. ("Warren Rupp") warrants to the original end-use purchaser that no product sold by Warren Rupp that bears a Warren Rupp brand shall fail under normal use and service due to a defect in material or workmanship within five years from the date of shipment from Warren Rupp's factory. Warren Rupp brands include Warren Rupp®, SANDPIPER®, SANDPIPER Signature Series™, MARATHON®, Porta-Pump®, SludgeMaster™ and Tranquilizer®.

The use of non-OEM replacement parts will void (or negate) agency certifications, including CE, ATEX, CSA, 3A and EC1935 compliance (Food Contact Materials). Warren Rupp, Inc. cannot ensure nor warrant non-OEM parts to meet the stringent requirements of the certifying agencies.

~ See sandpiperpump.com/content/warranty-certifications for complete warranty, including terms and conditions, limitations and exclusions. ~

**WARREN
RUPP, INC.**

Declaration of Conformity

Manufacturer: Warren Rupp, Inc., 800 N. Main Street
Mansfield, Ohio, 44902 USA

Certifies that Air-Operated Double Diaphragm Pump Series: HDB, HDF, M Non-Metallic, S Non-Metallic, M Metallic, S Metallic, T Series, G Series, U Series, EH and SH High Pressure, RS Series, W Series, SMA and SPA Submersibles, and Tranquilizer® Surge Suppressors comply with the European Community Directive 2006/42/EC on Machinery, according to Annex VIII. This product has used Harmonized Standard EN809:1998+A1:2009, Pumps and Pump Units for Liquids - Common Safety Requirements, to verify conformance.


Signature of authorized person

David Roseberry
Authorised Representative:
IDEX Pump Technologies
R79 Shannon Industrial Estate,
Shannon, Co. Clare
Ireland

October 20, 2005
Date of issue

Engineering Manager
Title

February 27, 2017
Date of revision



Revision Level: F



WARREN RUPP, INC.

EC / EU Declaration of Conformity

The objective of the declaration described is in conformity with the relevant Union harmonisation legislation: Directive 94/9/EC (until April 19, 2016) and Directive 2014/34/EU (from April 20, 2016).

Manufacturer:

Warren Rupp, Inc.
A Unit of IDEX Corporation
800 North Main Street
P.O. Box 1568
Mansfield, OH 44902 USA

Applicable Standard:

EN13463-1: 2001
EN13463-5: 2003
EN60079-25: 2004

Harmonised Standard:

EN13463-1: 2009
EN13463-5: 2011
EN60079-25:2010

The harmonised standards have been compared to the applicable standards used for certification purposes and no changes in the state of the art technical knowledge apply to the listed equipment.

AODD Pumps and Surge Suppressors

Technical File No.: 203104000-1410/MER

AODD (Air-Operated Double Diaphragm) Pumps

EC Type Examination Certificate No. Pumps: KEMA 09ATEX0071 X

DEKRA Certification B.V. (0344)
Meander 1051
6825 MJ Arnhem
The Netherlands

Hazardous Locations Applied:

I M1 c	II 1 G c T5
II 2 G Ex ia c IIC T5	II 1 D c T100°C
II 2 D Ex c iaD 20 IP67 T100°C	II 2 G c T5
II 2 G Eex m c II T5	II 2 D c T100°C
II 2 D c IP65 T100°C	II 2 G c IIB T5

SANDPIPER®
A WARREN RUPP, INC. BRAND

Tranquilizer®

DATE/APPROVAL/TITLE:
18 March 2016

David Roseberry
David Roseberry, Director of Engineering

IDEX