

Intended Use

This air dryer is designed to remove 99% of the water, rust and other contaminants commonly present in compressed air lines. Clean, dry air enhances the life and performance of pneumatically-driven equipment.

Installation

This unit should be installed in the air line, between the air compressor and any in-line filter, regulator, or air dryer. This unit should be used in low humidity, and installed as far as possible from the compressor. Do not operate this air dryer below the minimum operating pressure range stated in the specifications.

This unit is equipped with auto drain capability.

Specifications

AIR DRYER 020.046.007

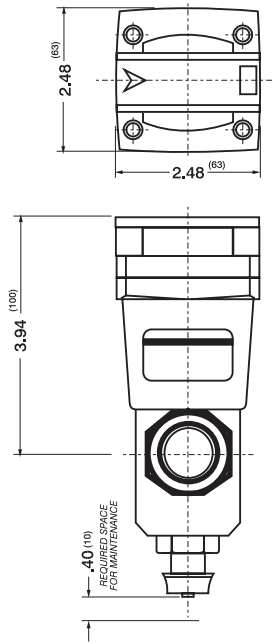
<i>Port size</i>	¼" (.64cm)
<i>Applicable air compressor</i>	Approx. 2.2 kW
<i>Operating pressure range</i>	.15~1 MPa (1.5~10.2kg/cm ²)
<i>Proof pressure</i>	1.5 MPa (15.3kg/cm ²)
<i>Flow rate</i>	10.6 SCFM (300 l/min)
<i>Ambient temp</i>	36~140°F (2~60°C)
<i>Fluid temp</i>	36~140°F (2~60°C)
<i>Auto drain</i>	Normally-open type
<i>Weight</i>	.84 lbs. (.38kg)

AIR DRYER 020.047.007

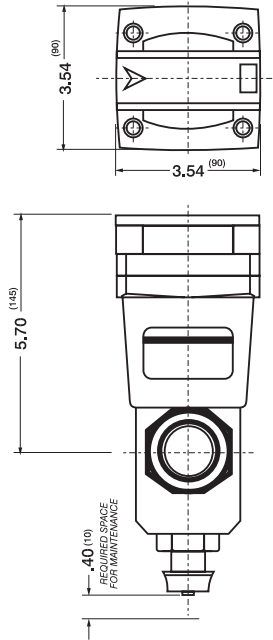
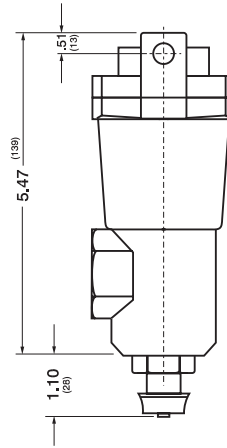
<i>Port size</i>	½" (1.27cm)
<i>Applicable air compressor</i>	Approx. 11 kW
<i>Operating pressure range</i>	.15~1 MPa (1.5~10.2kg/cm ²)
<i>Proof pressure</i>	1.5 MPa (15.3kg/cm ²)
<i>Flow rate</i>	53 SCFM (1500 l/min)
<i>Ambient temp</i>	36~140°F (2~60°C)
<i>Fluid temp</i>	36~140°F (2~60°C)
<i>Auto drain</i>	Normally-open type
<i>Weight</i>	1.98 lbs. (.9kg)

AIR DRYER 020.048.008

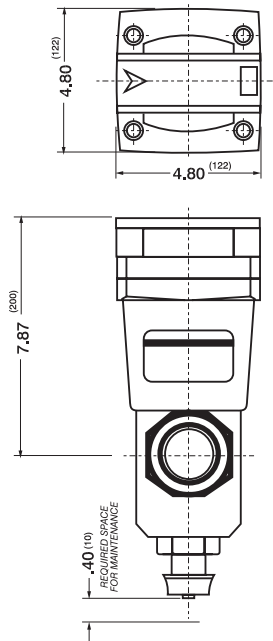
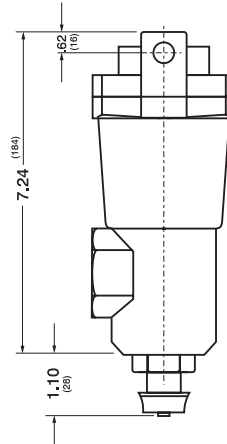
<i>Port size</i>	1" (32.54cm)
<i>Applicable air compressor</i>	Approx. 22 kW
<i>Operating pressure range</i>	.15~1 MPa (1.5~10.2kg/cm ²)
<i>Proof pressure</i>	1.5 MPa (15.3kg/cm ²)
<i>Flow rate</i>	123.6 SCFM (3500 l/min)
<i>Ambient temp</i>	36~140°F (2~60°C)
<i>Fluid temp</i>	36~140°F (2~60°C)
<i>Auto drain</i>	Normally-open type
<i>Weight</i>	4.63 lbs. (2.1kg)



AIR DRYER
Part No.: 020-046-007



AIR DRYER
Part No.: 020-047-007



AIR DRYER
Part No.: 020-048-008

